

Infrared surface heating element

for integration in the IR cabin

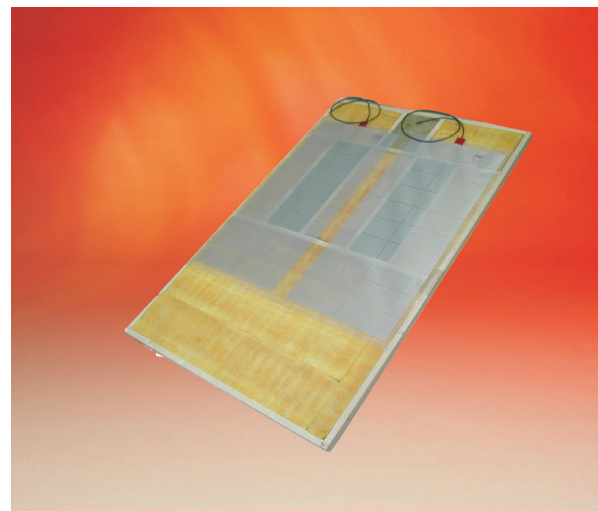
Assembling of the heating element:

polyester foil with aluminium heating element, heavy metal free, safety temperature guard at the upper end of the foil in a silicone housing.

Switch off temperature = 120° C

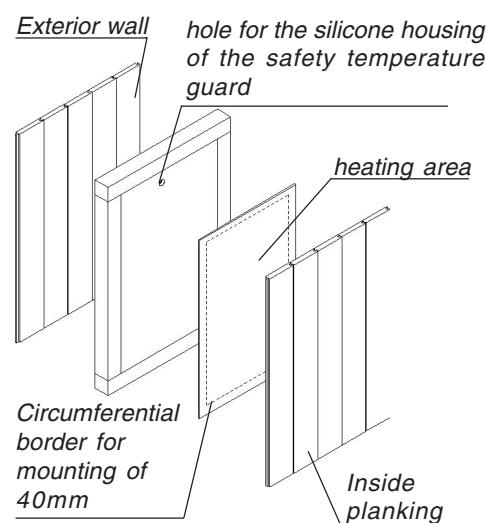
Re heating temperature = 110° C

Circumferential border for mounting of 40mm.

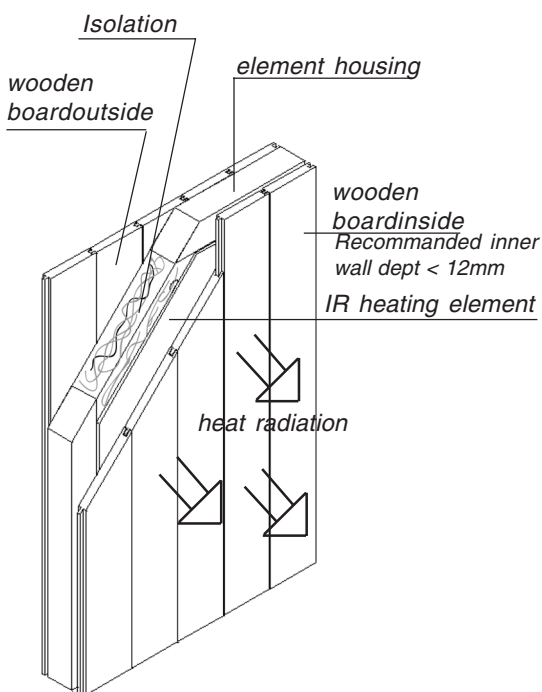


MADE IN GERMANY

Assembling scheme



Functional Principle



Art.-No.	Electr. connection / power	Circumferential border for mounting	Dimensions of the foil in cm	Dimensions of heating area in cm	Spectrum	for operation with control units
943742	230 V N AC 50 Hz ca. 650 W	4 cm	170 x 80	162 x 72	> 6 µm IR-C	EMOTEC HIC 75 60 IR
943743	230 V N AC 50 Hz ca. 550 W		145 x 80	137 x 72		
943744	230 V N AC 50 Hz ca. 450 W		160 x 60	152 x 52		
943745	230 V N AC 50 Hz ca. 350 W		125 x 60	117 x 52		
943835	230 V N AC 50 Hz ca. 275 W		160 x 40	152 x 32		
943891	230 V N AC 50 Hz ca. 90 W		60 x 30	52 x 22		

29343152en 42.06

Technical subject to change