

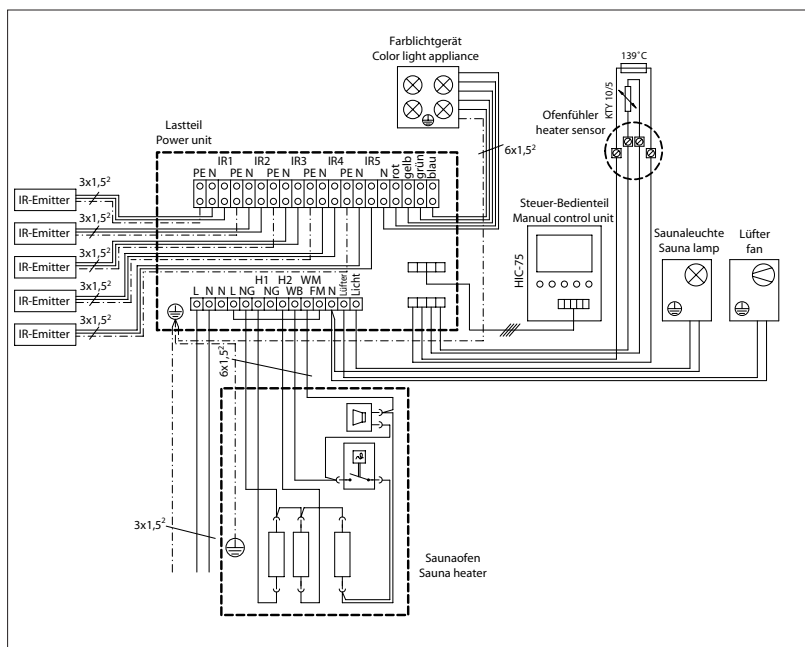
Sauna control unit EMOTEC HIC 75

- Casing: injection moulded plastic upper and lower part
- Control buttons: raised, with epoxy abrasion protection
- Display: jumbo LCD display, with high contrast backlighting
- Control: digital two-point control
- Heating time shut-off: 6 hours
- Humidity control: portional to time or optional with humidity sensor (Art.-No. 90.9479)
- IR operation: max. 3.3 kW with 5 emitters
- Reheating: 20 mins after humidity program
- Low water control: automatic shut down after 2 mins lack of water
- Coloured light operation: max. 4 x 100W (optional with module for coloured light control, ArtNo. 94.2761)

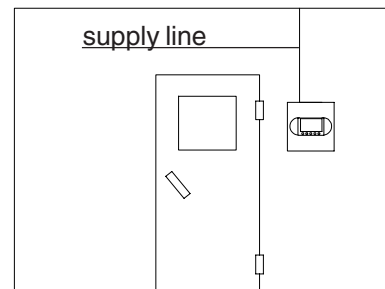
The control unit consists of two parts connected by a control line approx. 2.50 m long. The fig. shows only the terminal part. All electrical connections are made at the power pack.



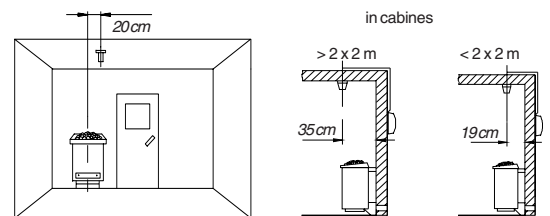
Connection diagram



CE IP x4 AR56 MADE IN GERMANY



Mounting the sensor



Art.-No	elektr. connection / capacity	connection for power switch gear to max. 36 kW	24 h real time clock	Time preselection	Control range sauna operation	Heating time shut-off	Humidity control	Control range in humidity and infrared operation	Switching on/off		Dimensions H/W/D in cm	Environmental temperatures	Weight without package
									Cabin lighting	Ventilator			
94.2762	230 V N AC 50 Hz max. 3.3 kW ohm resistive load In humidity operation 2 kW + vaporizer 1 kW	yes	yes	24 h	70 - 110°C	6 h	proportional to time from 30 to 100 %	30 - 70 °C	dimmable to max. 100W ohm resistive load	controllable to max. 100W without starting capacitor	Terminal 17/18/4 Power pack 24/23/7	-20°C to +70 °C	Terminal approx. 300 g Power pack approx. 1.2 kg

Subject to technical modifications