

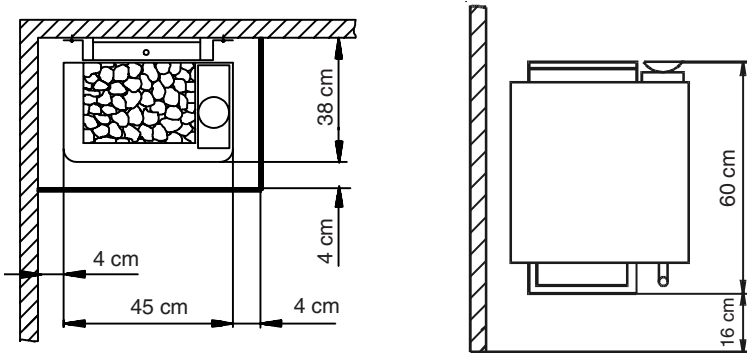
## ELECTRIC SAUNA OVEN

### Typ Bi-O-Mat W

Combination wall oven with evaporator pocket integrated in oven's side. Solid high-alloyed plain burnished steel outer and inner casing. Water container for 5 litres. Steam outlet next to sauna stones. High-alloyed steel herb basin for herbs, essential oils and other essences. Acoustic water shortage warning. Residual water outlet featuring ball valve. Includes 15 kg unit of Diabas sauna stones. Recommended for family saunas.



CE IPx4 DVE GS MADE IN GERMANY



sauna stones

sheet metal covering with herb basin

water container

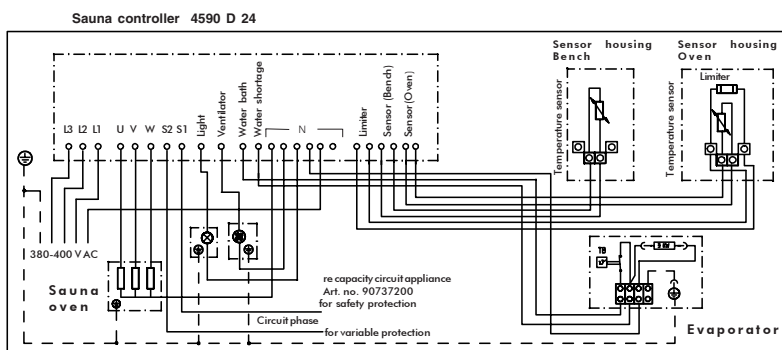
heating elements

tubular heating element

socket

water outlet

electric water shortage monitoring through buzzer



art.-no.	capacity:	Voltage	oven installation dimensions in cm	suitable for cabin volumes	minimum ventilation size	weight (excl. stones and packaging)	Stone filling:	outer casing
90.9432	6,0 kW	400 V 3N AC 50 Hz	76/45/38	6 - 8 m <sup>3</sup>	35 cm x 4 cm *)	ca. 16,0 kg	15 kg	high-alloyed steel, plain
90.9433	7,5 kW	400 V 3N AC 50 Hz	76/45/38	7 - 10 m <sup>3</sup>	35 cm x 5 cm *)	ca. 16,5 kg	15 kg	high-alloyed steel, plain
90.9434	9,0 kW	400 V 3N AC 50 Hz	76/45/38	9 - 14 m <sup>3</sup>	35 cm x 6 cm *)	ca. 17,0 kg	15 kg	high-alloyed steel, plain

\*or according to cabin producer's specification.

Subject to technical modifications.